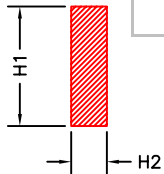


PROJECT:		LOCATION:	
OWNER:		SCALE:	
ENGINEER:		DRAWN BY:	JGS
CONTRACTOR:		DATE:	
MANUFACTURER:		DWG. NO.:	
PRODUCT DESIGNATION:	ecoStorm - gross particulate separation technology		
DESIGNED BY:	JGS	CHECK 1:	
		CHECK 2:	

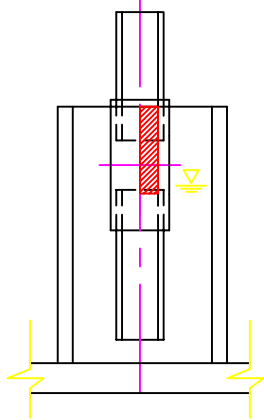
REVISIONS

model no.	Peak flow rate Q_p (cfs)	Treatment flow rate Q_t (cfs)	ecoStorm			vertical weir dim		Palladium Weir scoop / 45° bend dim.		Detention @ Q_t t1 (+/-sec.)
			D1 dia. (ft.)	D2 dia. (ft.)	D3 dia. (ft.)	H1 (in.)	H2 (in.)	dim. (typ to #)	dim. (typ to #)	
			(ft.)	(ft.)	(ft.)	(in.)	(in.)	(typ to #)	(typ to #)	
4	28	7.00	12.00	6.00	*	*	*	scoop	scoop	115
3	22	5.50	10.00	4.00	*	*	*	scoop	scoop	118
2	16	4.00	8.00	2.50	*	*	*	scoop / 45°	scoop / 45°	87
1.5	12	3.00	7.00	2.50	*	*	*	45°	45°	85
1	8	2.00	6.00	2.50	*	*	*	45°	45°	82

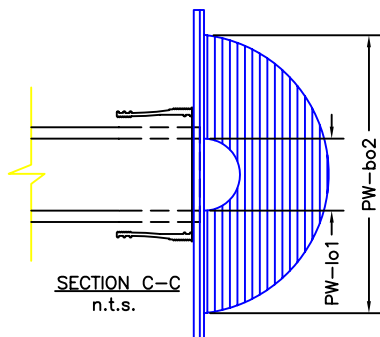
* requires site specific hydraulic sizing information



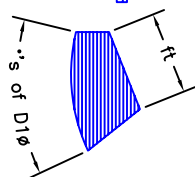
VERTICAL WEIR OPENING
n.t.s.



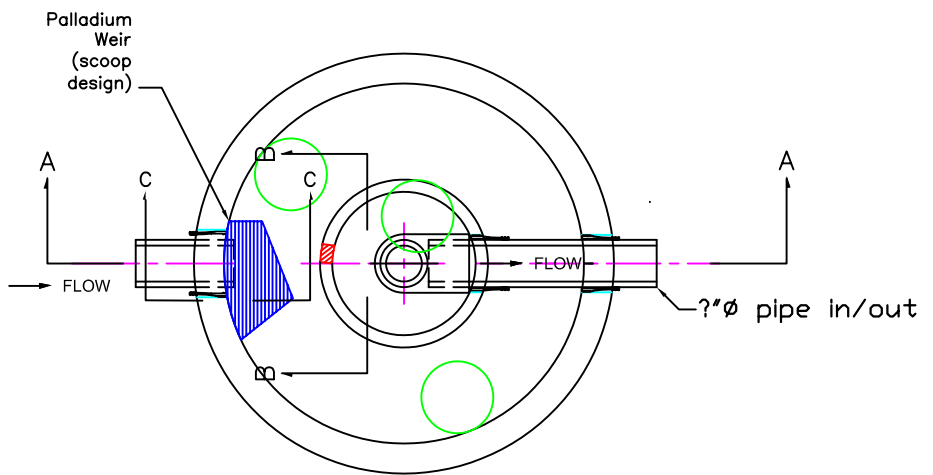
SECTION B-B
n.t.s.



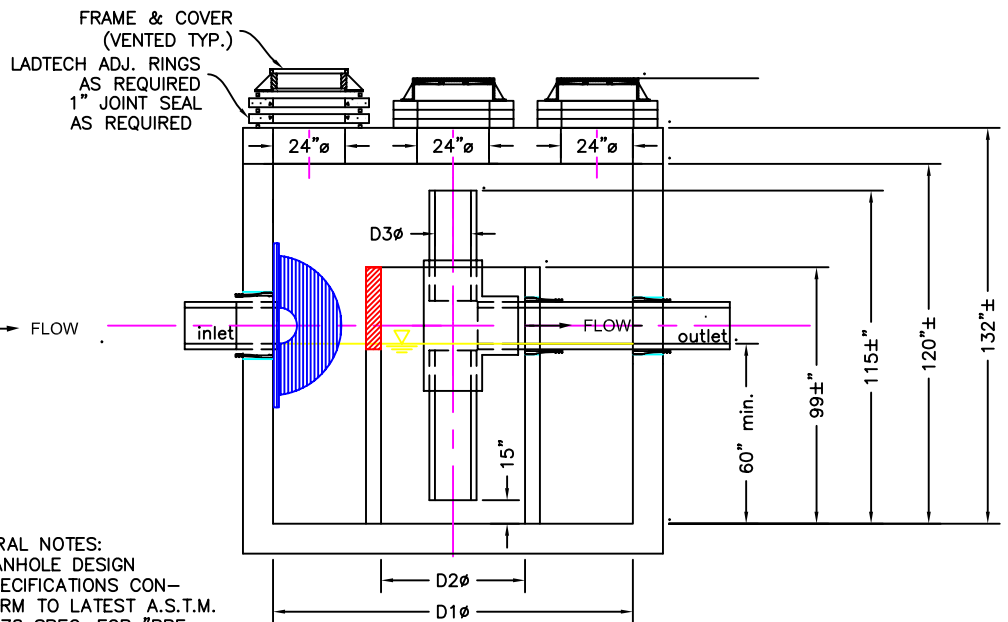
SECTION C-C
n.t.s.



"Palladium Weir scoop geometry"
n.t.s.



PLAN
n.t.s.



SECTION A-A
n.t.s.

GENERAL NOTES:
MANHOLE DESIGN SPECIFICATIONS CONFORM TO LATEST A.S.T.M. C478 SPEC. FOR "PRE-CAST REINFORCED CONCRETE MANHOLE SECTIONS."

DESIGN LOADING: AASHTO HS20-44