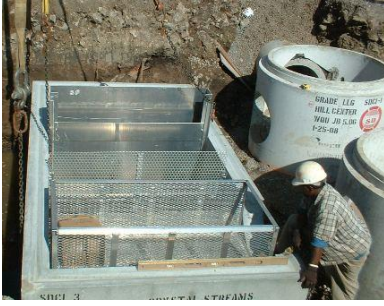


## PRODUCTS



### Precast Structural Best Management Practices [Stormwater Quality Units]

#### Engineering

Sherman Dixie has partnered with a select group of highly efficient national treatment technologies. From the beginning, we evaluate the very specific nature of your project plan so that we can design and specify equipment accordingly. Our goal is to provide treatment systems that are the right fit and will provide value over time.

#### Equipment

##### • CrystalStream Technologies

CrystalStream Technologies is an innovator in the field of structural stormwater Treatment Best Management Practices (or BMPs). Using sound engineering principles combined with top Precast Producers, CrystalStream has created a cost-effective stormwater BMP that can be designed to fit virtually any site. Whether your flows are 1 CFS or 100 CFS, CrystalStream can design a solution online or offline to fit your project needs. Our products are customized to each location to ensure your stormwater runoff is clean to the standards of the local jurisdiction. From Design to Installation to Maintenance, CrystalStream and Sherman Dixie are there for you.

##### • Suntree

Nutrient Separating Baffle Boxes ( NSBB) With 4 sizes capable of physically treating up to 46 CFS,

Precast Suntree Baffle Boxes differ than other type SWQU's in that Suntree's unique design captures nutrient rich vegetation, litter and phosphates using stainless steel filtration screens that keep this material elevated above the static water line, keeping it there permanently until the next scheduled unit maintenance.

Specialized turbulent deflectors prevent captured sediment from re-suspending while hydrocarbon booms collect and store hydrocarbons within the unit.

**CONTACT INFO** Sherman-Dixie Concrete • 200 42<sup>nd</sup> Avenue North • Nashville, Tennessee • 37209  
(800) 737-0707 E-mail: [productinfo@shermamdixie.com](mailto:productinfo@shermamdixie.com) [www.shermamdixie.com](http://www.shermamdixie.com)

SHERMANDIXIE

